



Basic Info Sala BeCool (Main Room)

VENUE TYPE	CLUB
ADDRESS	AV. DIAGONAL, 618 BAJOS 08021 BARCELONA (SPAIN)
PHONE/FAX	+ 34 933 620 413
EMAIL	info@salabecool.com
BOOKINGS	CONCERTS: BRUNO FÀBREGAS (brunofabregas@grupodejavu.com) EVENTS & PARTIES: PAULA TABOADA (paulataboada@salabecool.com)
CAPACITY	350 STANDING
STAGE	5m. x 4m. x 0,6m. height
STAGE FLOOR	WOOD
STAGE HEIGHT TO ROOF	2,05m.
DANCE FLOOR	21m2 SPINNING DANCE FLOOR (in front of the stage, only for club shows)
SOUND WINGS	NO
EQUIPMENT HANGING	NO
BACKDROP	NO
FOH	13m FROM STAGE
FRONT BARRIER	NO
DOWNLOADING	PL. JOAN LLONGUERAS, 5 08021 BARCELONA
ACCESS	STAIRS (18 STEPS)
PARKING	NO
POWER ON STAGE	15 KW
POWER SOCKETS ON STAGE	19 SCHUKO
DRESSING ROOM	4,7m. x 2m. BATHROOM AND SHOWER WITH HOT WATER
MERCHANDISE	YES, NO CONCESSION
WORKING SCHEDULE	17:00-00:00



Sound Rider Sala BeCool (Main Room)

P.A.	
SPEAKERS	4 TURBOSOUND THL-2 4 BOSE 802 II
SUBS	2 TURBOSOUND TSW-718 2 BOSE PANARAY 502 BP
AMPLIFICATION	1 CREST AUDIO CA4 1 CREST AUDIO CA6 1 CREST AUDIO CA9 1 BOSE 1800 SERIES V 1 BOSE 1800 SERIES VI
PROCESSOR	1 DBX DRIVERACK PA
FOH	
SOUND DESK	1 ALLEN & HEATH GL3300 (32CH.)
FX	1 TC ELECTRONICS M-ONE 1 LEXICON MPX 100
COMPRESSOR/GATES	2 DBX 266XL 2 BEHRINGER MDX 2100
EQ	1 KLARK TECHNIC DN 360
CD	1 AMERICAN AUDIO MCD 110
MONITORS	
WEDGES	2 TURBOSOUND TFM-420 1 D.A.S. SML-12A (AUTOAMPLIFIED) 1 HK AUDIO PRO 12MA (AUTOAMPLIFIED)
DRUMFILL	1 HK AUDIO PRO 15XA (AUTOAMPLIFIED)
AMPLIFICATION	1 CREST AUDIO CA4
EQ	2 LA AUDIO EQ 231G
PROCESSOR	1 XILICA XP-2040 DSP PROCESSOR
MICROPHONES	
	4 SHURE SM58 4 SHURE SM 57 2 AKG D5 1 AUDIO TECHNICA ATM250DE 1 SENHEISER e604 1 DRUM KIT AUDIO TECHNICA 2 AKG C-1000 1 SHURE BETA 52
DI	2 LA AUDIO DI2 3 BEHRINGER ULTRA-DI DI100

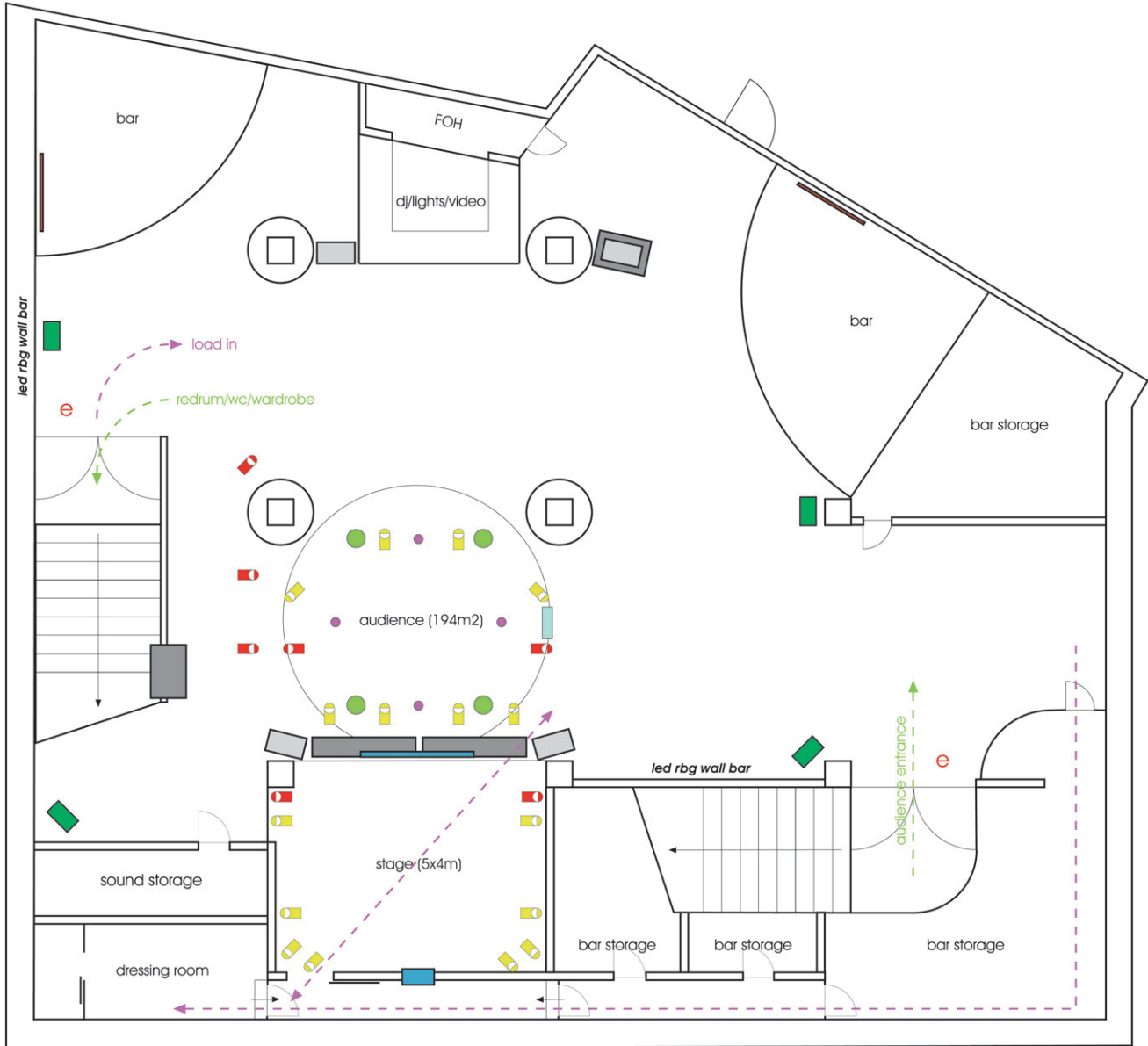


Lightning & Video Rider Sala BeCool (Main Room)

LIGHTS	
STAGE	8 PAR 56 LED RGB 2 PAR 56
VENUE	8 PAR 56 LED RGB 5 PAR 56 4 CLAY P AKI PIN SCAN 2 MARTIN MINIMAC PROFILE MODE 2/4 2 TOPLITE MERLIN C-20 MH LED SPOT 2 LED RGB WALL BARS 1 STROBO LIGHT 750W
CONTROL (FOH)	MARTIN LIGHTJOCKEY 2
VIDEO	
STAGE (unavailable during stage shows)	1 MITSUBISHI SD220U PROJECTOR 1 2,04x1,64m. RETROPROJECTION SCREEN
BAR	1 SAMSUNG PS50C430 50" PLASMA TV 1 PANASONIC TX-P50C2E 50" PLASMA TV
CONTROL (STAGE & FOH)	VIDEO: RCA COMPOSITE VIDEO CONNECTION (for both plasmas & projector) AUDIO: XLR/RCA/JACK TO SOUND DESK



Sala BeCool (Main Room)



sound:

- Turbosound THL-2 (front only for concert shows)
- Turbosound TSW-718 (only for club shows)
- BOSE Panaray 502 BP (only for concert shows)
- BOSE 802 II

lightning:

- PAR 56
- PAR 56 LED RGB
- front: Martin MiniMac profile mode 2/4
back: Toplite Merlin C-20 MH LED Spot
- Clay P aki Pin Scan
- Strobe Light 750w.

other:

- 50" fullHD plasma TV
- retroprojection screen
- Mitsubishi SD220U projector
- emergency exit
- basic audience movements
- crew movements