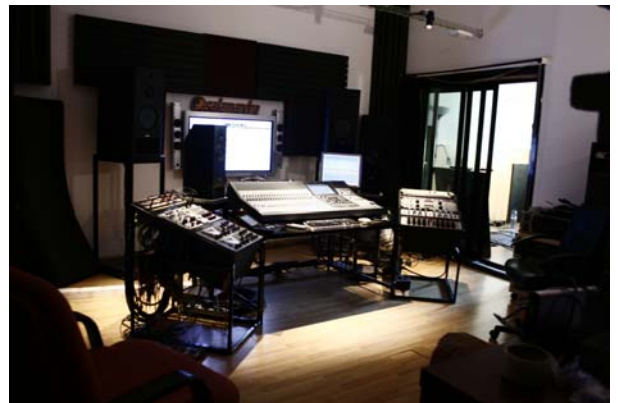


 ***salamandra***
salat

FOTOS





RIDER TÈCNIC

P.A.

- 6 QSC Isis Wideline 2102 (line array) per costat
- 4 sub QSC Wideline 218 SW
- 32.000w amplificats con 4 x QSC PL380 class D

CONTROL EXTERIOR

- 1 taula digital Venue D-Show Profile (digidesign)
- FX: TC Electronic M2000
- Intercom Clear.com MS – 200C

CONTROL MONITORS

- 1 taula digital Yamaha M7
- 32 chanel klarktechnik splitter :
 - to F.O.H. control
 - to monitor control
 - to studio control
- 8 HPR122i 12" 2-vias autoamplificades
- 1 Drum field QSC HPR152F+sub QSC HPR151i
- 2 Side field QSC MD-f152

MICROFONIA

- 2 x AKG 112
- 6 x SM 81
- 2 x AKG 451-ck1
- 1 x Shure SM 87 Beta
- 14 x Shure SM 58
 - 3 x inalambric Audio-technica 3000a series
 - 2 x Shure SM 58 Beta-A
- 15 x Shure SM 57
- 6 x Shure SM 98 A
 - 2 x Shure SM 91
 - 1 x Shure SM 94
- 2 x D.I. BSS AR-133
- 3 x D.I. BSS AR-116
- 4 x D.I. Behringer ULTRA-DI DI100

RIDER IL·LUMINACIÓ

- 2 Giotto Spot SGM 250
- 4 Victory II 250 SGM
- 1 Mixer SGM REGIA 2048
- 18 Projector Par 64 1.000 W.
- 6 Projector Par 56 300 W.
- 1 Màquina de fum Antari X300 Facer
- 24 canals de Dimmer 2Kw Bytecraft
- 1 splitter Dmx 6 canals

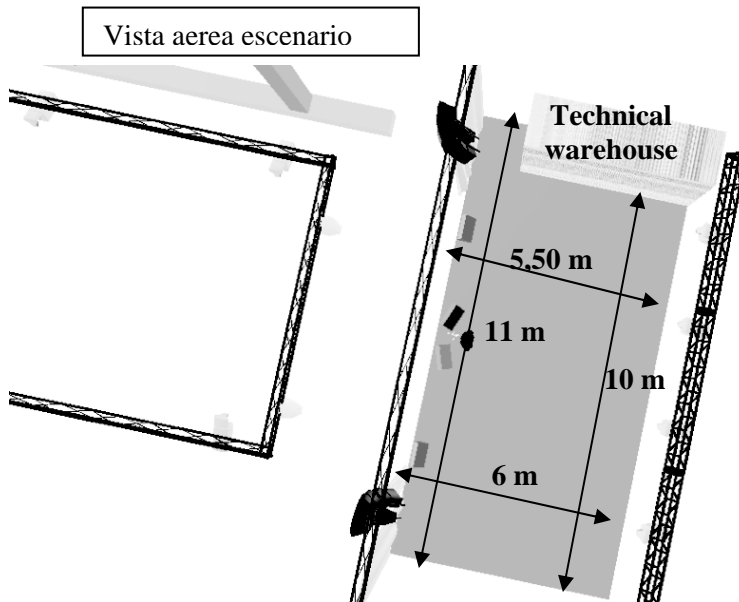
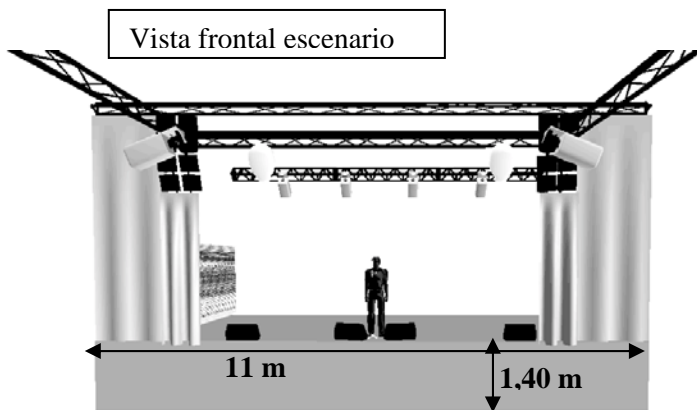
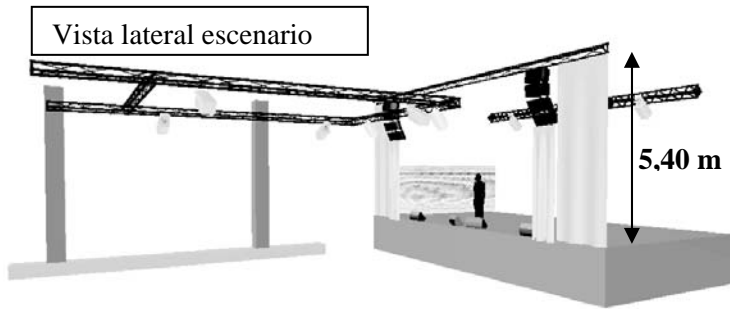
No es podrà modificar el sistema de P.A., sidefields, etapes i processador

RIDER ESTUDIO GRABACIÓ

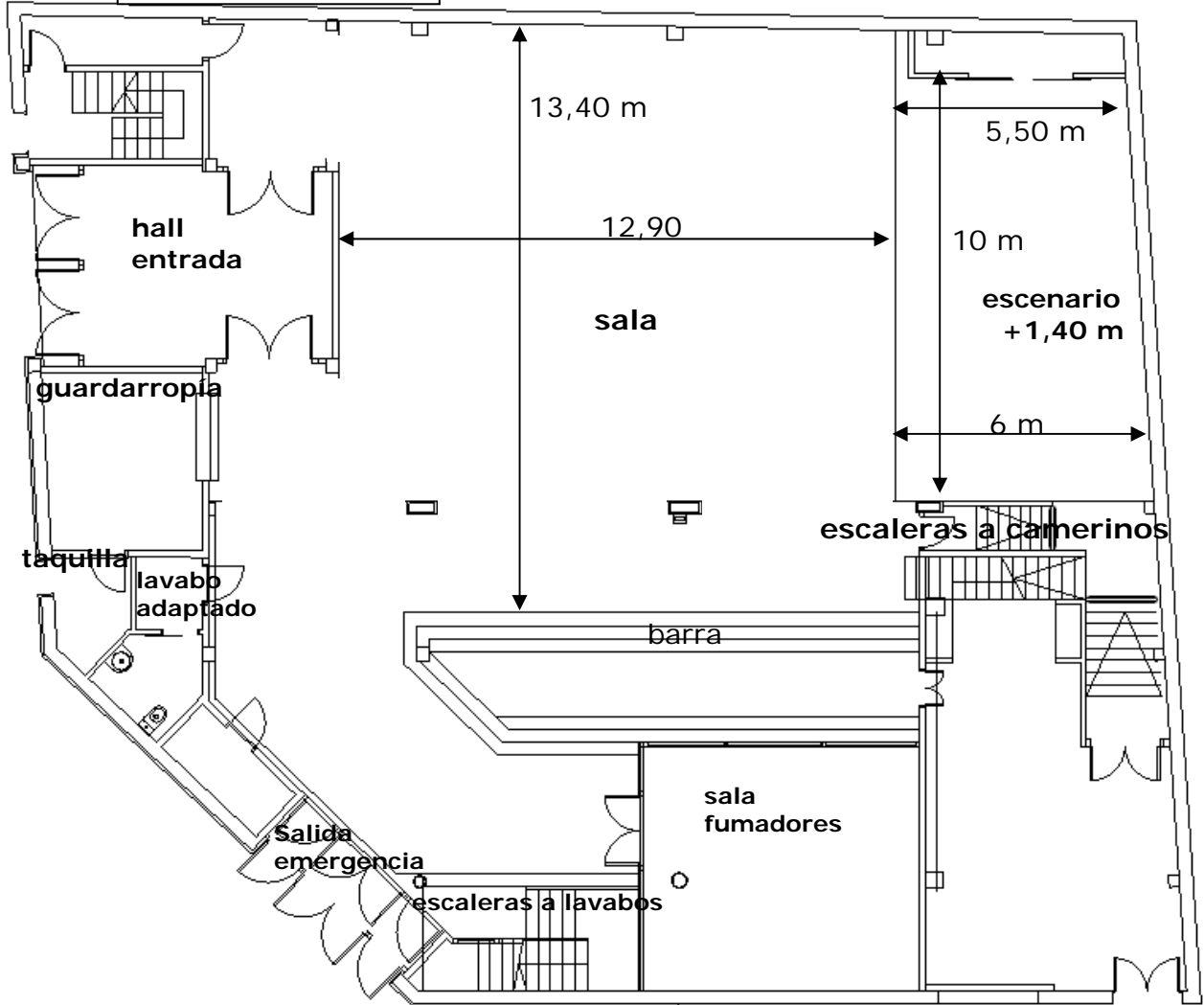
AUDIO

- DIGITAL MIXER SONY DMX- R100.
- 2 MANLEY VOXBOX
- 2 AVALON VT 737 SP.
- 2 ADL 1000.
- TC ELECTRONIC SYSTEM 6000 (4 ENGINE SOUND PROCESSOR).
- MANLEY EQUALIZER - MASSIVE/PASSIVE.
- AVALON EQUALIZER - AD 2055.
- MAC G4, WITH PROTOOLS HD2 7.3
- 2 PROTOOLS HD 192 INTERFACE.
- AD / DA APOGEE PSX 100.
- LOUD-SPEAKER PMC IB 1.
- NEAR SPEAKER PMC LB1.
- SPEAKER YAMAHA NS 10
- CD TASCAM – CD450.
- DAT FOSTEX D5.
- MINI-DISC SONY.
- TASCAM 112R MKII.
- DIRECT BOX ADL 300G.

PLANOS



Plano planta baia



Plano primera planta

